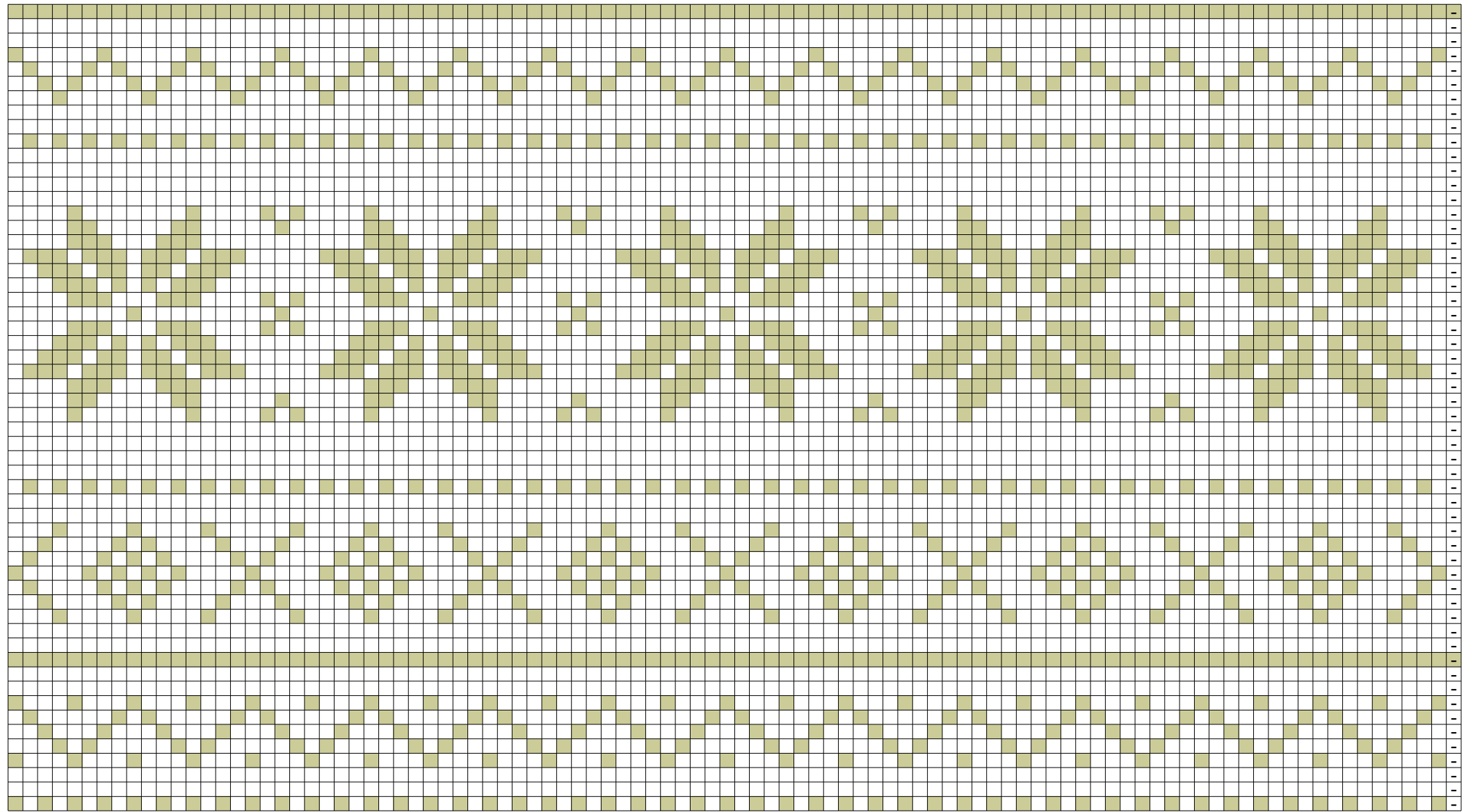
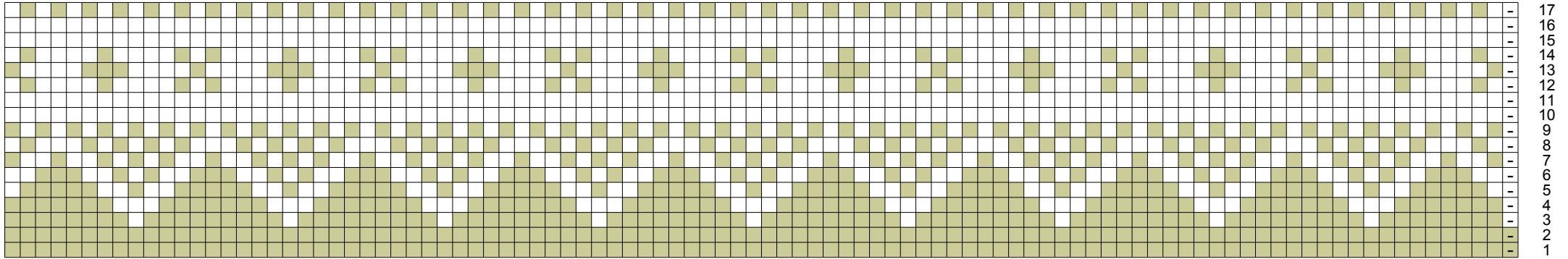


Norwegermuster Teil 2



73
72
71
70
69
68
67
66
65
64
63
62
61
60
59
58
57
56
55
54
53
52
51
50
49
48
47
46
45
44
43
42
41
40
39
38
37
36
35
34
33
32
31
30
29
28
27
26
25
24
23
22
21
20
19
18



- rechte Masche in dunkelgrau
- rechte Masche in hellbeige
- linke Masche in dunkelgrau
- linke Masche in hellbeige